



RUTLAND COUNTY  
GARDEN FURNITURE

*Hand-Crafted*

# ASSEMBLY INSTRUCTIONS

## OAKHAM STEEL PICNIC BENCH

Before you commence the assembly process we recommend that you read these instructions thoroughly beforehand to familiarise yourself with the assembly process and to also check that you have the correct components. If for any reason you need assistance, you can find our contact details on the final page of these instructions.

We highly recommend that any assembly is carried out on a flat, level surface if possible and that you use another person to assist you if necessary.

### PACKAGE CONTENTS

- 1 x Table top
- 2 x Seat panels
- 2 x Table A-frames
- 2 x Cross braces
- 4 of M8 x 60mm Bolts and self locking nuts
- 2 of M8 x 50mm Coach screws
- 12 of M8 x 70mm Coach screws
- Cover caps and washers

### TOOLS REQUIRED

- 10mm socket or spanner



THE OAKHAM STEEL PICNIC BENCH

# OAKHAM STEEL PICNIC BENCH

## Step 1



Ensure that you have all of the correct parts as listed on the front page of these instructions, including any fixings.

## Step 2



Lay the table top upside down on a clean, flat surface taking care not to damage it. Now line up one of the table A-frames centrally on the table top, ensuring that the gap at the table edge is the same on both sides.

## Step 3



Now, using 2 of the supplied 70mm coach screws secure the table A-frame to the fixing batten on the table top ...

## Step 4



...and then repeat for the other end of the table.

# OAKHAM STEEL PICNIC BENCH

## Step 5



In preparation for attaching the cross brace (as shown in figure 9) place a bolt and washer through each of the two holes in the A-frame crossbar...

## Step 6



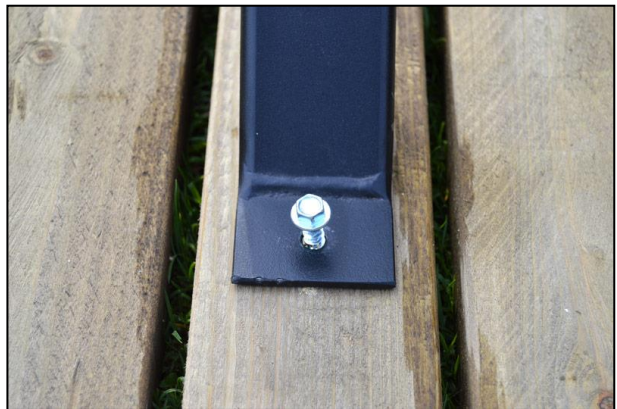
...and then offer up the the cross brace and loosely secure using a washer and a locknut for each of the two holes.

## Step 7



The cross brace should now be loosely attached as shown.

## Step 8



Now attach the other end of the cross brace to the underside of the table top using one of the 50mm coach screws and 2 washers, ensuring that the hole is centrally aligned across the middle slat of the table top.

# OAKHAM STEEL PICNIC BENCH

## Step 9



Now tighten all of the nuts and bolts before repeating steps 5 to 9 for the other end of the table.

## Step 10



After turning the table right side up, place each of the seat panels onto the frame assembly...

## Step 11



...and using the 70mm coach screws provided attach the seat panels to the A-frame at both ends of the bench.

## Step 12



Finally, cover any exposed coach screw/nut heads with the cover caps provided. Your Oakham steel picnic bench is now complete.

WE HOPE THAT YOU FOUND YOUR PRODUCT QUICK AND EASY TO ASSEMBLE BUT IF NOT AND YOU REQUIRE ANY FURTHER ASSISTANCE OR HAVE ANY QUESTIONS YOU CAN CONTACT US BY TELEPHONE ON: **01778 440803**  
EMAIL: [INFO@RUTLANDCOUNTYGARDENFURNITURE.CO.UK](mailto:INFO@RUTLANDCOUNTYGARDENFURNITURE.CO.UK)  
WWW.RUTLANDCOUNTYGARDENFURNITURE.CO.UK

Rutland County Garden Furniture Ltd, Ashbourne House, 2 Dovecote Meadows,  
Aslackby, Sleaford, Lincs, NG34 0HZ.  
Company No: 7670072 VAT No: 151744027