

ASSEMBLY INSTRUCTIONS

OAKHAM PICNIC BENCH

Before you commence the assembly process we recommend that you read these instructions thoroughly beforehand to familiarise yourself with the assembly process and to also check that you have the correct components. If for any reason you need assistance, you can find our contact details on the final page of these instructions.

We highly recommend that any assembly is carried out on a flat, level surface if possible and that you use another person to assist you if necessary.

PACKAGE CONTENTS

- 1 x Table top
- 2 x Seats
- 2 x Table A-frames
- 2 x Cross braces
- 2 x Seat supports and braces (8ft version)
- 12 x 70mm M8 Coach screws
- 4 x 60mm M8 Coach screws (12 x for 8ft version)
- 24 x Cover caps

TOOLS REQUIRED

- 10mm socket or spanner



THE OAKHAM PICNIC BENCH

OAKHAM PICNIC BENCH

Step 1



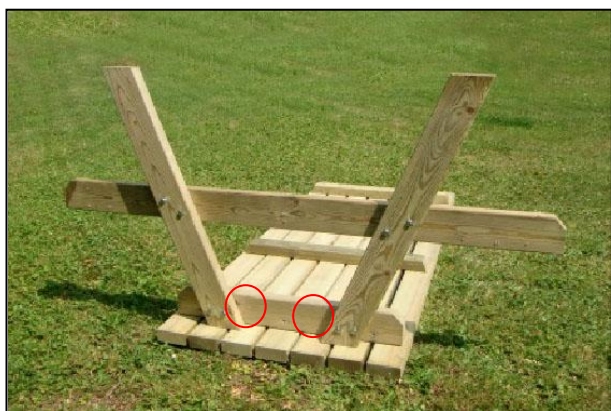
Ensure that you have all of the correct parts as listed on the front page of these instructions, including any fixings.

Step 2



Lay the table top upside down on a clean, flat surface taking care not to damage it. Now line up one of the table A-frames centrally on the table top as shown in step 3.

Step 3



Place one of the table A-frames centrally against the fixing batten ensuring that the gap at the table edge is the same on both sides. Now, using 2 of the supplied 70mm coach screws and the pre drilled holes, secure the table A-frame to the fixing batten on the table top.

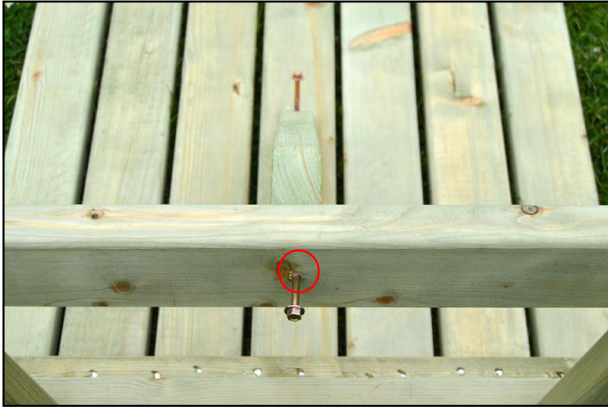
Step 4



Place a cross brace in position as shown, ensuring that it is flush with the underside of the table A-frame and proceed to step 5. If you are building the **3ft version** please refer to **Step 7** before proceeding with Step 5.

OAKHAM PICNIC BENCH

Step 5



Ensure that the brace is lined up centrally on the table and attach it to the A-frame with a 60mm coach screw.

Step 6



Make sure that the brace is still aligned centrally on the table and affix the other end to the table top with a 60mm coach screw as shown. Repeat steps 3 -6 to finish the table assembly and proceed to step 8.

Step 7



For the 3ft version steps 4 - 7 should be carried out but with the braces in an offset configuration as shown above and not centred on the table top. Now proceed with Step 5.

Step 8



Turn the table assembly right side up in preparation for attaching the seat panels.

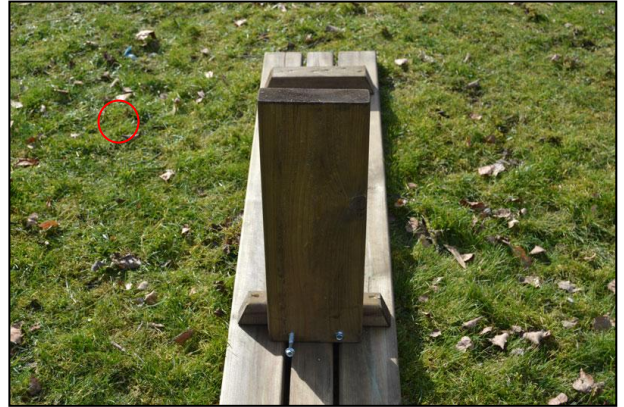
OAKHAM PICNIC BENCH

Step 9



For an 8ft model, follow Steps 9 to 12. Place one of the seat panels upside on a flat surface and place the seat support adjacent to the centre batten...

Step 10



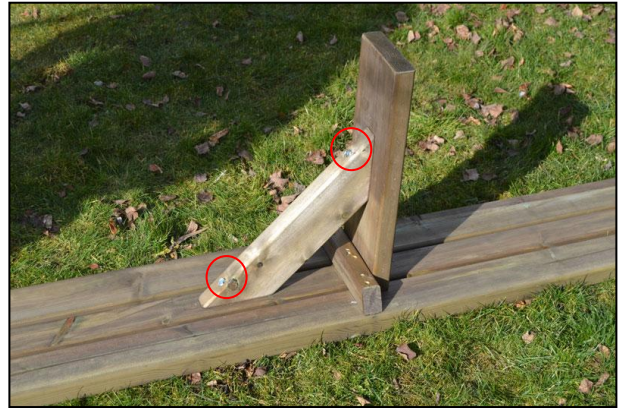
...and aligned centrally on the seat panel before fixing into place with 2 x 60mm coach screws as shown.

Step 11



Now place the brace set support brace as shown so that it is also aligned centrally...

Step 12



...before fixing into place with a 60mm coach through the brace into both the support and the underside of the seat panel.

OAKHAM PICNIC BENCH

Step 13



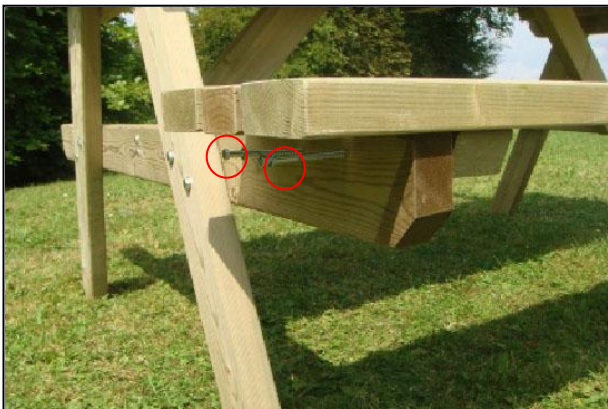
Place one of the seat panels in position as shown as and proceed to step 14.

Step 14



Align the seat panel batten with the outer end of the A-frame as shown and repeat for the other end of the seat panel.

Step 15



Using the 70mm coach screws provided attach the seat panel to the A-frame at both ends of the bench. Please note that the children's version will have only one screw at either end.
Repeat steps 13-15 for the other seat panel.

Step 16



Finally, cover any exposed coach screw heads with the cover caps provided. Your Oakham picnic bench is now complete.

WE HOPE THAT YOU FOUND YOUR PRODUCT QUICK AND EASY TO ASSEMBLE BUT IF NOT AND YOU REQUIRE ANY FURTHER ASSISTANCE OR HAVE ANY QUESTIONS YOU CAN CONTACT US BY TELEPHONE ON: **01778 440803**
EMAIL: INFO@RUTLANDCOUNTYGARDENFURNITURE.CO.UK
WWW.RUTLANDCOUNTYGARDENFURNITURE.CO.UK

Rutland County Garden Furniture Ltd, Ashbourne House, 2 Dovecote Meadows,
Aslackby, Sleaford, Lincs, NG34 0HZ.
Company No: 7670072 VAT No: 151744027