



RUTLAND COUNTY  
GARDEN FURNITURE

*Hand-Crafted*

# ASSEMBLY INSTRUCTIONS

## TINWELL PICNIC TABLE AND BENCH SET

Before you commence the assembly process we recommend that you read these instructions thoroughly beforehand to familiarise yourself with the assembly process and to also check that you have the correct components. If for any reason you need assistance, you can find our contact details on the final page of these instructions.

We highly recommend that any assembly is carried out on a flat, level surface if possible and that you use another person to assist you if necessary.

### PACKAGE CONTENTS

1 x Table top  
2 x Seat panels  
2 x Table leg frames  
4 x Seat leg frames  
4 x Seat leg braces  
2 x Table leg braces  
12 x M8 Coach screws 70mm  
20 x M8 Coach screws 60mm  
32 x Cover caps

\* 8ft version additionally includes - 2 x seat supports and braces, 8 x 60mm Coach screws and 8 x cover caps.

### TOOLS REQUIRED

10mm socket or spanner



TINWELL PICNIC TABLE AND BENCH SET

# TINWELL PICNIC TABLE AND BENCH SET

## Step 1



Ensure that you have all of the correct parts as listed on the front page of these instructions, including any fixings. Lay the table top upside down on a clean, flat surface, taking care not to damage it.

## Step 2



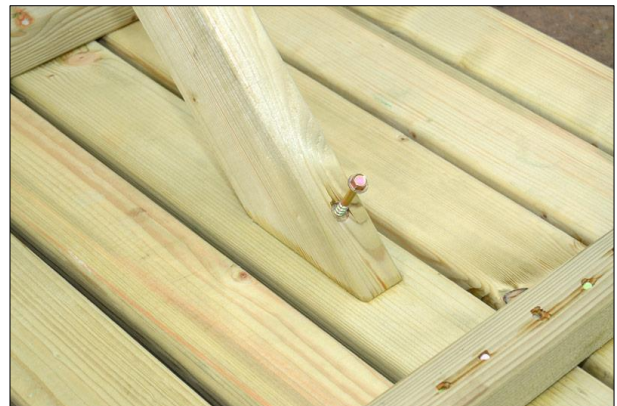
Now line up one of the table leg frames centrally on the table top as shown and secure in place using 2 70mm coach screws through the pre-drilled holes in the fixing batten.

## Step 3



Line up one of the Table leg braces centrally on the table top.

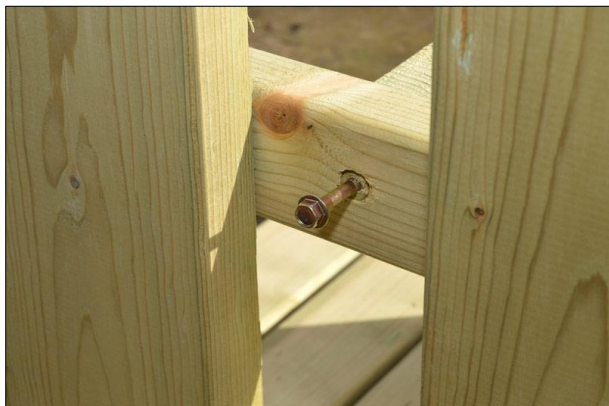
## Step 4



Attach it to the underside of the Table top using a 60mm coach screw as shown...

# TINWELL PICNIC TABLE AND BENCH SET

## Step 5



...and secure to the Table end frame by using another 60mm coach screw through the end frame.

## Step 6



Repeat Steps 2 to 5 so that both Table ends are attached...

## Step 7



...before turning the table right side up.

## Step 8



Place one of the seat panels upside down on a flat surface taking care not to damage the finish...



# TINWELL PICNIC TABLE AND BENCH SET

## Step 9



...and aligned one of the seat leg frames centrally on the seat panel as shown, before fixing into place with 2 x 70mm coach screws.

## Step 10



Now place the seat leg brace as shown so that it is also aligned centrally before fixing into place with a 60mm coach screw through the brace into both the seat leg frame and the underside of the seat panel.

## Step 11



Repeat for the other end of seat panel. The 8ft version has an additional centre support so proceed to Step 12 if you have this version. Otherwise proceed to Step 16.

## Step 12



Place one of the seat supports against the middle batten of the seat panel.

# TINWELL PICNIC TABLE AND BENCH SET

## Step 13



Check that it is centrally aligned and fix into place with 2 x 60mm coach screws.

## Step 14



Now place the support brace centrally aligned as shown....

## Step 15



...before fixing into place with a 60mm coach screw through the brace into both the seat support and the underside of the seat panel. Repeat steps 12 to 15 for the remaining seat.

## Step 16



Cover any exposed coach screw heads with the black cover caps. Your Tinwell picnic table and bench set is now complete.

WE HOPE THAT YOU FOUND YOUR PRODUCT QUICK AND EASY TO ASSEMBLE BUT IF NOT AND YOU REQUIRE ANY FURTHER ASSISTANCE OR HAVE ANY QUESTIONS YOU CAN CONTACT US BY TELEPHONE ON: **01778 440803**  
EMAIL: [INFO@RUTLANDCOUNTYGARDENFURNITURE.CO.UK](mailto:INFO@RUTLANDCOUNTYGARDENFURNITURE.CO.UK)  
WWW.RUTLANDCOUNTYGARDENFURNITURE.CO.UK

Rutland County Garden Furniture Ltd, Ashbourne House, 2 Dovecote Meadows,  
Aslackby, Sleaford, Lincs, NG34 0HZ.  
Company No: 7670072 VAT No: 151744027