



RUTLAND COUNTY
GARDEN FURNITURE

Hand-Crafted

Assembly Instructions

Rutland Wall Mounted Pergola & Decking Kit

Before you commence the assembly process we recommend that you read these instructions thoroughly beforehand to familiarise yourself with the assembly process and to also check that you have the correct components. If for any reason you need assistance, you can find our contact details on the final page of these instructions.

We highly recommend that any assembly is carried out on an open flat, level surface if possible with sufficient space. You will also require the assistance of 2 adults to complete assembly safely.

Please note: The wall plate provided will need to be secured to a sound brick or stone wall. Fixings are **not** included for this stage.

Package contents

- 2 x Posts
- 2 x 500mm diagonal braces
- 2 x 800mm diagonal braces
- 2 x Runners (one to be used as wall plate)
- 6 x Rafters
- 1 x Base frame front assembly
- 5 x Base frame joists
- 2 x Base frame sides
- 2 x Side cladding panel
- 1 x Front cladding panel
- 2 x Decking edge section
- Decking slats (number dependant on size)
- 2 x M8 70mm Coach screws
- 12 x M8 120mm Coach screws
- 24 x 75mm and qty of 65mm screws

Tools required

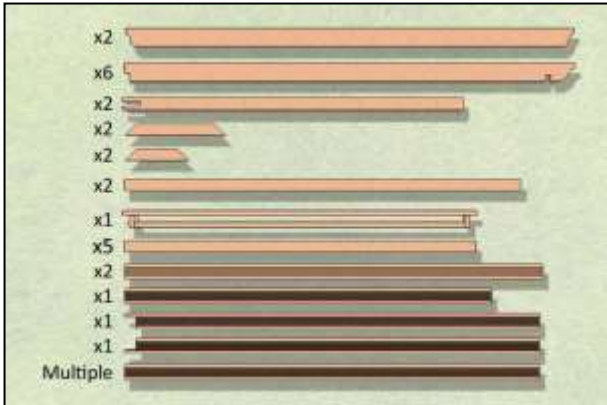
- 10mm socket drive
- Electric screwdriver with No2 Pozidrive bit
Or No2 Pozidrive Screwdriver
- Platform or Step ladder
- Laser or Spirit level
- Electric drill
- 5 wall fixings for wall plate



The Rutland Wall Mounted Pergola & Decking Kit

Rutland Wall Mounted Pergola & Decking

Step 1



Ensure that you have all of the correct parts as listed on the front page of these instructions, including any fixings. (One of each main component is shown here)

Step 2



First, work out where you wish to affix your wall plate, ensuring that it is positioned so that the area directly in front of it is flat, level and able to support the structure. Also check that the longer side of the wall plate is at the top.

Step 3



The lower edge should be 2559mm above the ground but if required it can be fitted lower, as long as the same amount is removed from the bottom of each post. E.g. If you wish to fit the lower edge of the wall plate 2400mm above ground level then remove 159mm from the bottom of each post. (2599 minus 2400 equals 159)

Step 4



Attach the wall plate using suitable fixings for the wall construction. Measure in 400mm from each end and use 5 fixings distributed evenly and vertically centred across the wall plate secure it to the wall, making sure it is horizontal with a laser or spirit level.

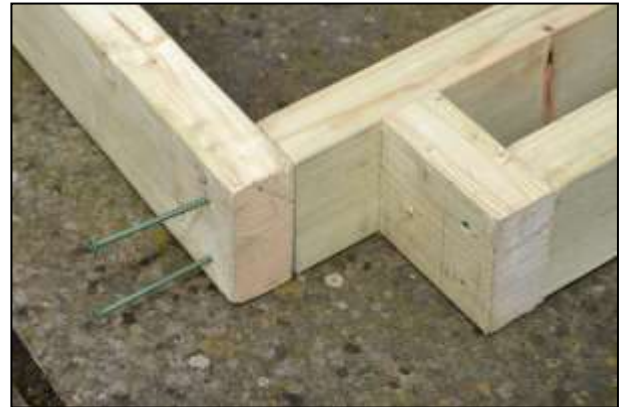
Rutland Wall Mounted Pergola & Decking

Step 5



Lay out the base components adjacent to the wall where your wall plate is mounted. The base front assembly should be furthest from the wall and oriented as shown. The 5 joists should be roughly aligned to the markings on the 2 base frame sides.

Step 6



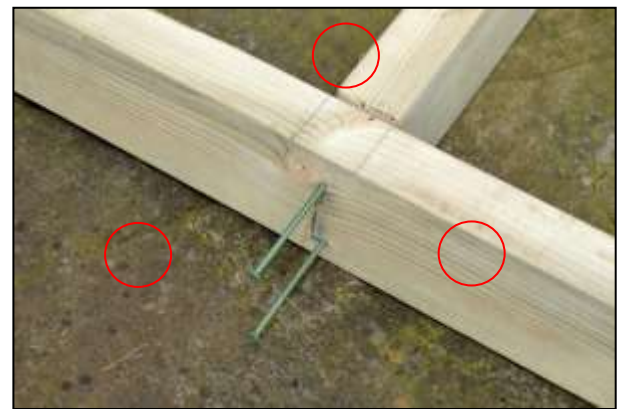
Attach the base frame sides to the base front assembly using 2 x 75mm screws in the pre-drilled holes, making sure that the ends are flush and everything is square. Repeat for the other side frame.

Step 7



Butt the end of the joist closest to the wall up to the end of the side frame, make sure everything is flush and aligned and then screw through the pre-drilled holes in the side frame into the joist end using 2 x 75mm screws. Repeat for the other side.

Step 8



Line up the end of each joist end with the markings on the side frames, making sure the top faces are also flush, before screwing into place with 2 x 75mm screws.

Rutland Wall Mounted Pergola & Decking

Step 9



With the base assembly complete, slide it into place against the wall. To ensure it is central on the wall plate, mark the centre of the wall plate and the base frame and drop a plumb line from the wall plate - adjust the base position until the line and centre mark coincide.

Step 10



Get an assistant to hold a post upright in the pocket at the front corner of the base frame. Make sure that the notch in the top of the post is correctly oriented so that it is parallel to the wall plate...

Step 11



...before securing it into place with a 70mm coach screw through the pre-drilled hole in the frame front assembly. Attach the second post in the same manner.

Step 12



With the help of an assistant, slot the remaining runner into the top of the posts, using the markings on the runner to correctly align it centrally across the structure.

Rutland Wall Mounted Pergola & Decking

Step 13



Fix the runner in place with 2 x 75mm screws through both post tops as shown.

Step 14



Now sit the outer rafters in place so that the inner face is butted against the post at the front and the rear is resting on the wall plate, aligned with the corresponding markings.

Step 15



Fix the first rafter into place with a 120mm coach screw down through the top face into the wall plate at the wall end and into the runner at the other.

Step 16



Add the remaining rafters, using the markings on the runner and wall plate to align them before securing in place with 2 x 120mm coach screws as per the outer rafters.

Rutland Wall Mounted Pergola & Decking

Step 17



Position the short braces so that each end is flush a) with the inner face of the post and b) with the underside of the runner and centrally aligned before securing in place with a 65mm screw at both ends.

Step 18



Now attach the longer braces by aligning the top 45° face with the inner top edge of the rafter...

Step 19



... and the bottom 45° face with the post, making it flush with the outer edge of the post before screwing the top and bottom into place with 3 x 65mm screws - 2 at the top and 1 at the bottom (do not over tighten).

Step 20



Place the correct Decking edge section in place so that it locates around the post as shown with the decking running front to back and the outside edge flush with the frame edge before securing in place with 2 x 65mm screws.

Rutland Wall Mounted Pergola & Decking

Step 21



Align the rear facing end of the same section in place, again aligning its outer edge with that of the frame section before securing in place with 2 x 65mm screws.

Step 22



Work your way down the edge section, keeping it flush with the frame and using the joists as a guide, affix in place with 2 x 65mm screws at every joist. Repeat Steps 20 -22 for the other decking edge section.

Step 23



Take one of the decking sections and place it centrally across the joists as shown.

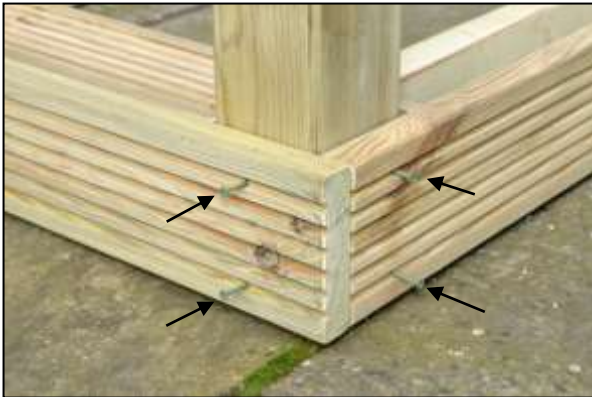
Step 24



Identify the side cladding panels with the 3 parallel lines as shown here.

Rutland Wall Mounted Pergola & Decking

Step 25



Place the side cladding and front cladding in place and ensure they are flush with both the upper surface of the decking edge section fitted previously and with each other at the outer corner, before securing with 65mm screws as shown above.

Step 26



Using the decking section that you placed centrally earlier as a height guide, fix the centre of the front cladding in place, flush with the top surface of the decking using a 65mm screw.

Step 27



Add intermediate screws through the front cladding into the frame.

Step 28



Now lay the decking sections onto the frame, butting the edges of the decking up against the inner face of the front cladding section. If the spacing is irregular, adjust as necessary by eye so that the sections are evenly spaced.

Rutland Wall Mounted Pergola & Decking

Step 29



Fix the decking sections into place, using the frame joists as a guide for the screw spacing, with two screws at the edges and at each joist intersection.
TIP: If you encounter a decking section that is bowed, simply bend it whilst screwing it into the frame to remedy this.



Your Rutland Wall Mounted Pergola & Decking Kit is now complete.

We hope that you found your product quick and easy to assemble but if not and you require any further assistance or have any questions you can contact us by telephone on: **01778 440803**

Email: info@rutlandcountygardenfurniture.co.uk

www.rutlandcountygardenfurniture.co.uk