

ASSEMBLY INSTRUCTIONS

BARLEYTHORPE PICNIC TABLE AND BENCH SET

Before you commence the assembly process, we recommend that you read these instructions thoroughly beforehand to familiarise yourself with the assembly process and to also check that you have the correct components. If for any reason you need assistance, you can find our contact details on the final page of these instructions.

We highly recommend that any assembly is carried out on a flat, level surface if possible and that you use another person to assist you if necessary.

PACKAGE CONTENTS

- 1 x Table top
- 2 x Seat panels
- 2 x Table A frames
- 2 x Seats backrests
- 4 x Bench A frames
- 4 x Backrest supports
- 6 x Cross braces (4 x for 3 & 4ft sets)
- 4 x M8 Coach screws - 70mm
- 44 x M8 Coach screws - 60mm
- 44 x Cover caps

* 7 and 8ft version additionally includes - 2 x seat supports and 4 x braces,
12 x 60mm Coach screws and 12 x cover caps.

TOOLS REQUIRED

- 10mm socket or spanner



THE BARLEYTHORPE PICNIC TABLE AND BENCH SET

BARLEYTHORPE PICNIC TABLE AND BENCH SET

Step 1



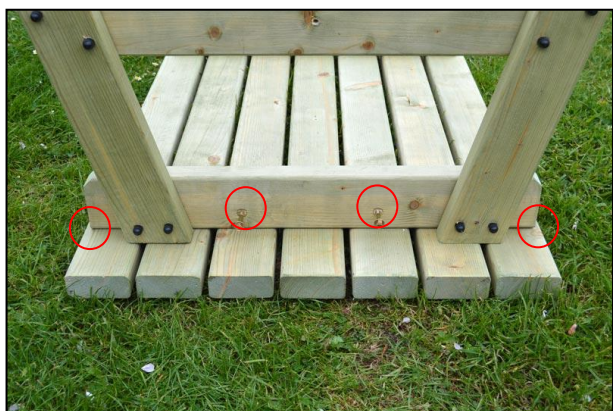
Ensure that you have all of the correct parts as listed on the front page of these instructions, including any fixings. (5 to 7ft set components shown here)

Step 2



Lay the table top upside down on a clean, flat surface taking care not to damage it. Now line up one of the table A-frames centrally on the table top as shown in step 3.

Step 3



Place one of the table A-frames centrally against the fixing batten ensuring that the gap at the table edge is the same on both sides. Now, using 2 of the supplied 70mm coach screws and the pre drilled holes, secure the table A-frame to the fixing batten on the table top.

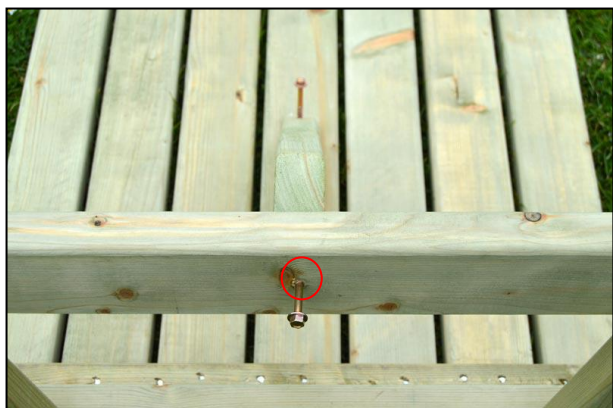
Step 4



Place a cross brace in position as shown, ensuring that it is flush with the underside of the table A-frame and proceed to step 5.

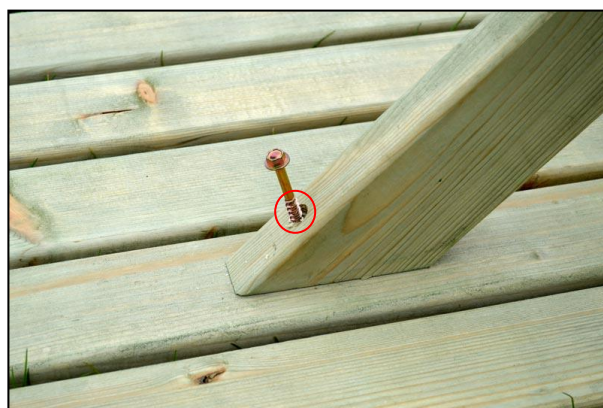
BARLEYTHORPE PICNIC TABLE AND BENCH SET

Step 5



Ensure that the brace is lined up centrally on the table and attach it to the A-frame with a 60mm coach screw.

Step 6



Make sure that the brace is still aligned centrally on the table and affix the other end to the table top with a 60mm coach screw as shown. Repeat steps 3 -6 to finish the table assembly and proceed to step 7.

Step 7



For a 8ft model, follow Steps 7 to 10. Place one of the seat panels upside on a flat surface and place the seat support adjacent to the centre batten...

Note: The seat panels have asymmetric battens that extend over one edge.

Step 8



...and aligned centrally on the seat panel before fixing into place with 2 x 60mm coach screws as shown.

BARLEYTHORPE PICNIC TABLE AND BENCH SET

Step 9



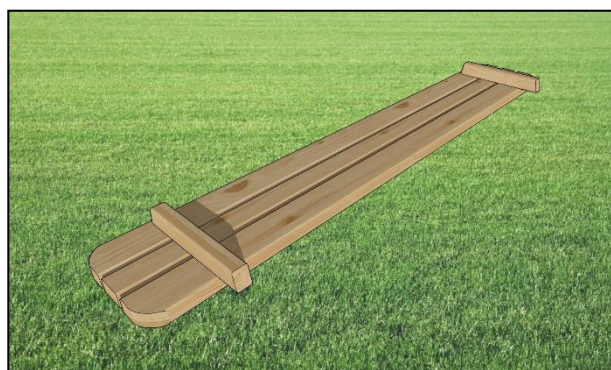
Now place the brace set support brace as shown so that it is also aligned centrally...

Step 10



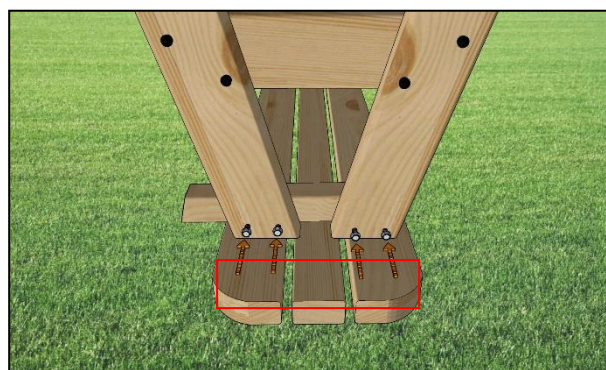
...before fixing into place with a 60mm coach screw through the brace into both the seat support and the underside of the seat panel. Add a second brace to the other side of the support in the same way. Repeat steps 7 to 10 for the remaining seat.

Step 11



Lay one of the seat panels face down on the flat surface as you did with the table top.

Step 12



Place one of the bench A-frames centrally against the fixing batten ensuring that the gap at the bench edge is the same on both sides. Now, using 4 of the supplied 60mm coach screws and the pre drilled holes, secure the bench A-frame to the fixing batten on the seat and repeat for the remaining 3 A- frames.

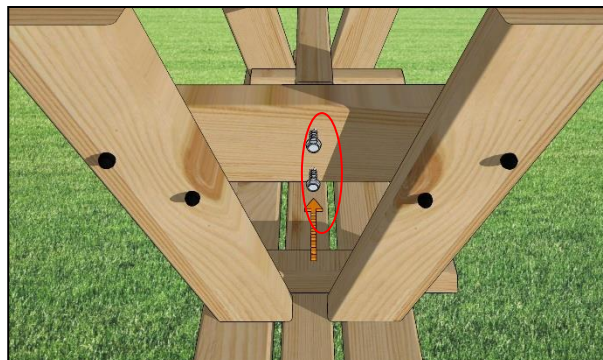
BARLEYTHORPE PICNIC TABLE AND BENCH SET

Step 13



For a 3 or 4ft set, take one of the bench braces and align it between the two A-frames...

Step 14



...before securing into place using 2 60mm coach screws at either end as shown.

Step 15



For a 5 to 8ft set, place a brace aligned centrally on the seat as shown and affix to the bench with a 60mm coach screw into the seat...

Step 16



...and another 60mm coach screw through the A-frame into the brace.

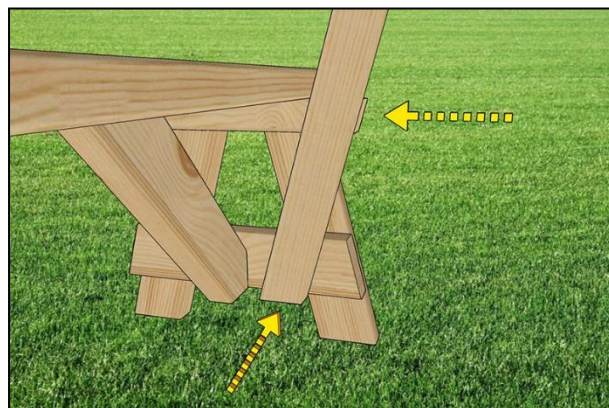
BARLEYTHORPE PICNIC TABLE AND BENCH SET

Step 17



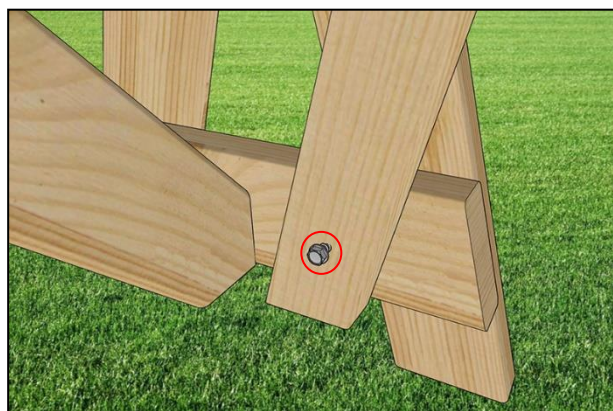
Add the remaining braces to both seat assemblies.

Step 18



Turn the benches right way up and line up one of the pre-drilled backrest supports so that the bottom is flush with the bottom brace and the back edge is flush with the under-seat batten as shown.

Step 19



Fix in place with a 60mm coachscrew at the bottom of the backrest support...

Step 20



...and another 60mm coach screw through the under-seat batten. Repeat for the remaining backrest supports.

BARLEYTHORPE PICNIC TABLE AND BENCH SET

Step 21



Line up a backrest so that the tops of the backrest supports are flush with the battens as shown, before securing into place at each end with 2 x 60mm coachscrews.

Step 22



Finally, cover any exposed coach screw heads with the cover caps provided. Your Barleythorpe picnic table and bench set is now complete.

WE HOPE THAT YOU FOUND YOUR PRODUCT QUICK AND EASY TO ASSEMBLE BUT IF NOT AND YOU REQUIRE ANY FURTHER ASSISTANCE OR HAVE ANY QUESTIONS YOU CAN CONTACT US BY TELEPHONE ON: 01778 440803
EMAIL: INFO@RUTLANDCOUNTYGARDENFURNITURE.CO.UK
WWW.RUTLANDCOUNTYGARDENFURNITURE.CO.UK